



INSTRUCTION BULLETIN

No. 9012970
Machine: T17
Published: 02-2015
Rev. 00

NOTE: DO NOT DISCARD the Parts List from the Instruction Bulletin. Place the Parts List in the appropriate place in the machine manual for future reference. Retaining the Parts List will make it easier to reorder individual parts and will save the cost of ordering an entire kit.

NOTE: Numbers in parenthesis () are reference numbers for parts listed in Bill of Materials.

Installation instructions for **kit number 9020060**

SYNOPSIS:

This kit contains the parts needed to install an optional Pre- Sweep kit onto T17 scrubbers.
Please follow step-by-step instructions.

SPECIAL TOOLS / CONSIDERATIONS: NONE

(Estimated time to complete: 5 hours)



PROTECT THE ENVIRONMENT

Please dispose of packaging materials, used machine components such as batteries and fluids in an environmentally safe way according to local waste disposal regulations.

Always remember to recycle.

PREPARATION:

FOR SAFETY: Before leaving or servicing machine, stop on level surface, turn off machine, and remove key.

1. Disconnect the battery cable from the machine.



WARNING: Always disconnect battery cables from machine before working on electrical components.

2. Remove the front bumper assembly from the machine. (Fig. 1)

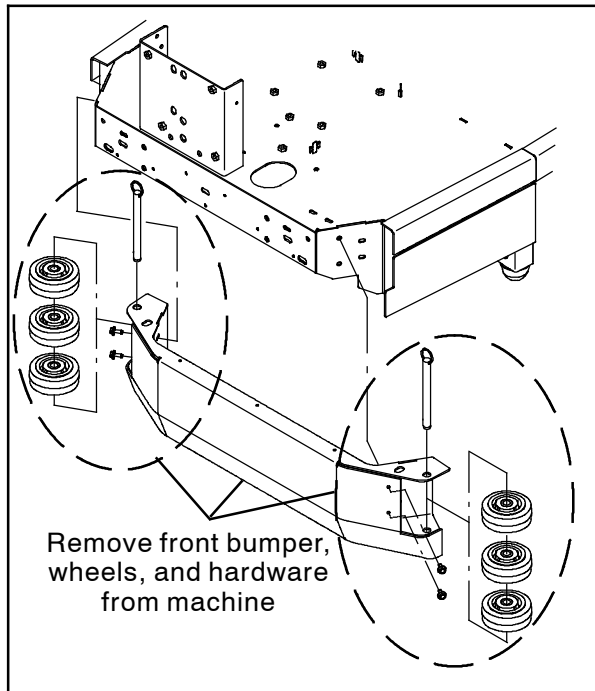


FIG. 1

3. Remove the access panel from the steering channel. Set the access panel and mounting hardware aside. (Fig. 2)



FIG. 2

4. Disconnect the main wire harness from the seat switch located on the bottom of the seat. (Fig. 3)

5. Remove the seat platform assembly from the machine. Set the upper platform, lower platform, and all mounting hardware aside. (Fig. 3)

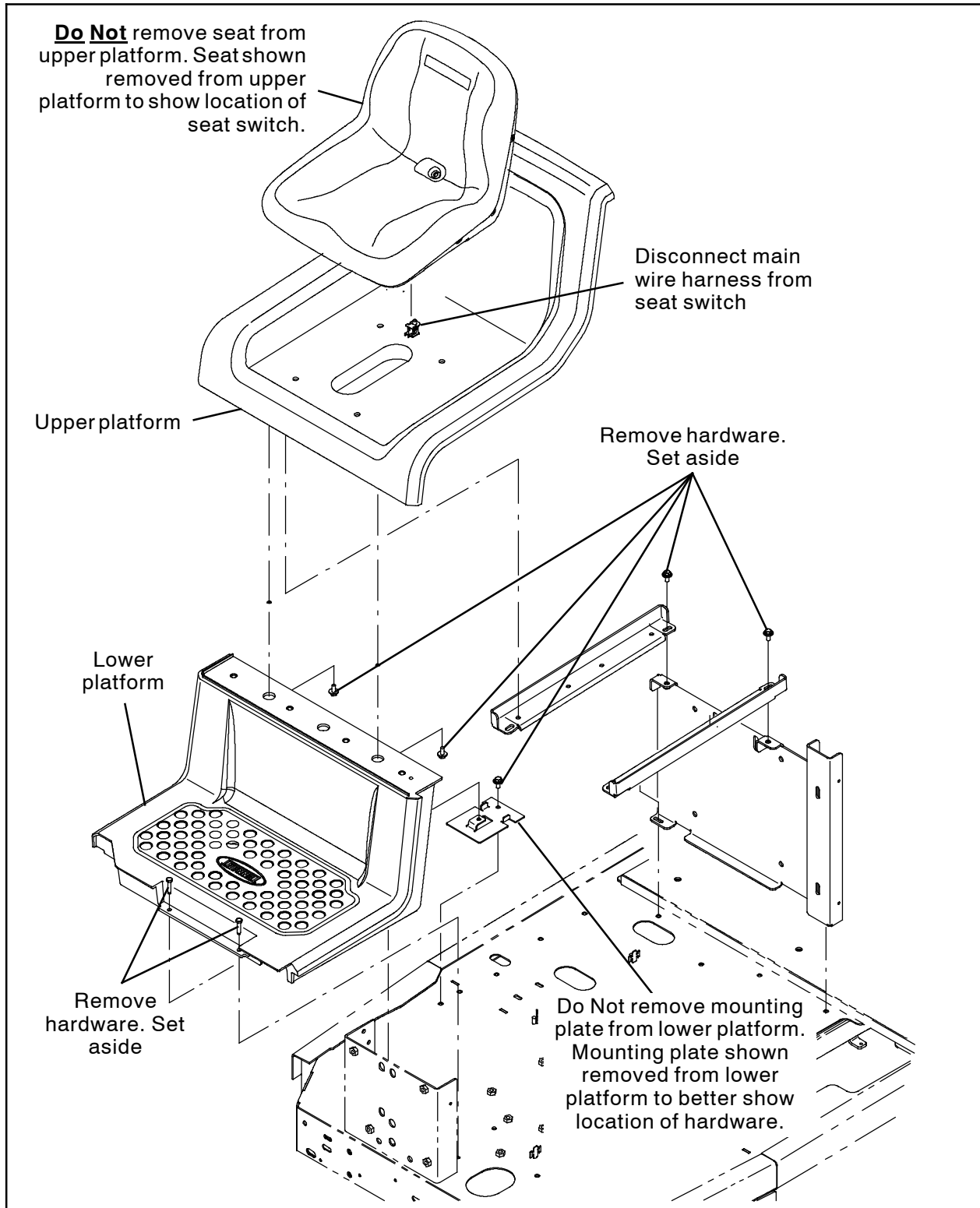


FIG. 3

6. Remove the SEMS M6 hex screws securing the electrical enclosure cover to the electrical enclosure. Set the SEMS M6 hex screws aside. (Fig. 1)

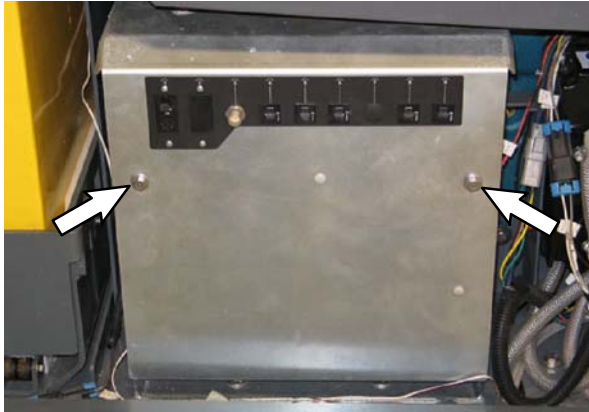


FIG. 4

7. Carefully remove the electrical enclosure cover from the electrical enclosure and position as shown. **Do Not** break or damage wires / wire connections when removing the electrical enclosure cover from the electrical enclosure. (Fig. 1 / Fig. 2)

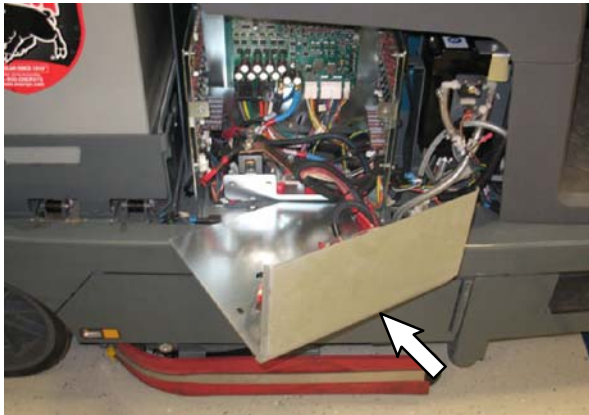


FIG. 5

INSTALLATION:

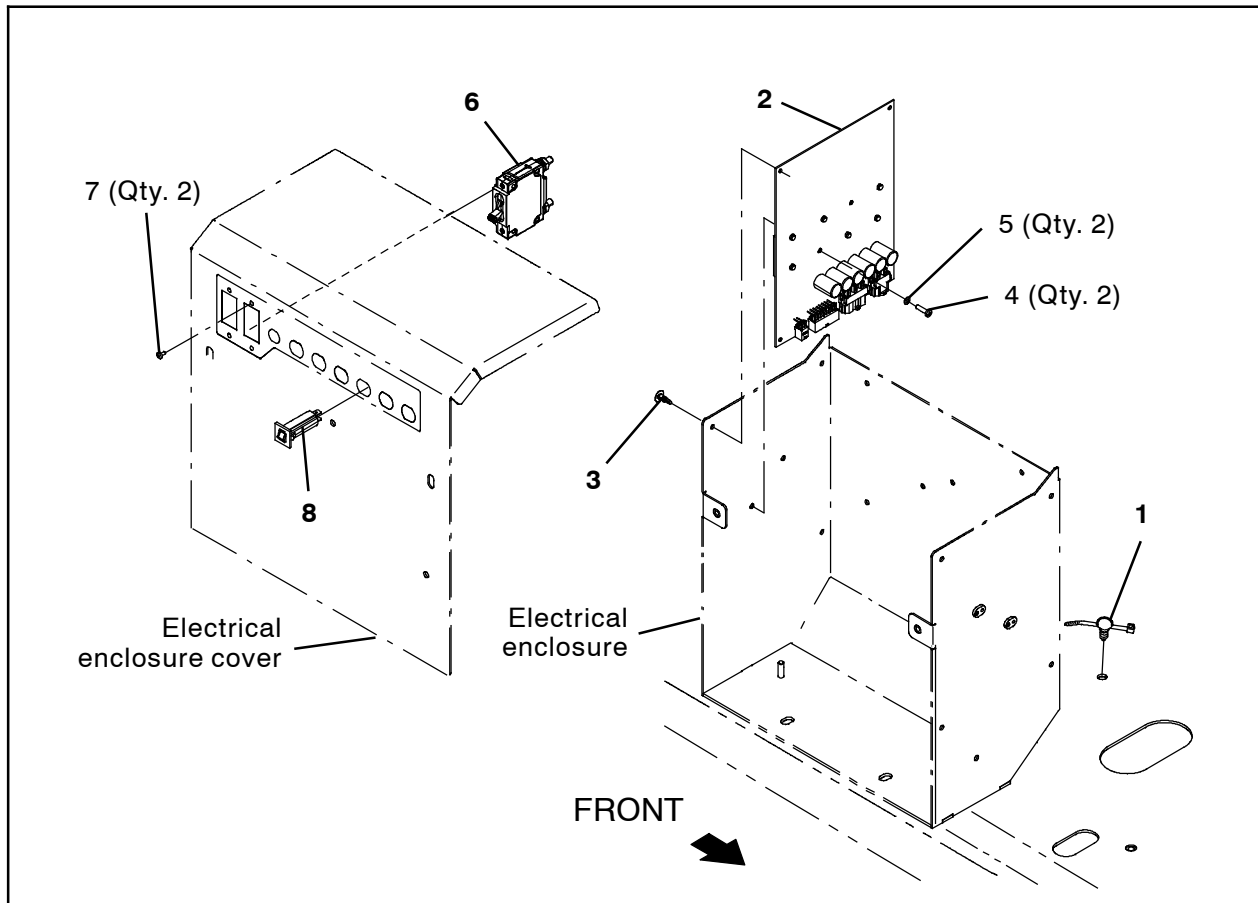


FIG. 6

1. Use two M3 pan screws (7) to install the 50- Amp circuit breaker (6) into the electrical enclosure cover CB2 location. (Fig. 6)
2. Install the 2.5- Amp circuit breaker (8) into the electrical enclosure cover CB7 location. (Fig. 6)
3. Install four standoffs (3) into the electrical enclosure. (Fig. 6)
4. Install the circuit board (2) onto the four standoffs (3). (Fig. 6)
5. Use two M4 pan screws (4) and two flat washers (5) to secure the circuit board (2) onto the electrical enclosure. (Fig. 6)
6. Install one wire tie clip (1) into the frame of the machine. (Fig. 6)
7. Insert a cable tie into the wire tie clip (1) in the frame of the machine. (Fig. 6)
8. Connect the Pre- Sweep harness (3) to the 50- Amp circuit breaker (6) and the 2.5- Amp circuit breaker (8). (Fig. 6 / Fig. 7)
9. Connect the Pre- Sweep harness (30) to the circuit board (2). (Fig. 6 / Fig. 7)
10. Connect the Pre- Sweep harness (30) ground leads to ground located inside the electrical enclosure. (Fig. 7)
11. Connect the Pre- Sweep harness (30) headlight lead to the main wire harness. (Fig. 7)
12. Route the Pre- Sweep harness (30) past the wire tie clip (1) and use a cable tie to secure the Pre- Sweep harness to the wire tie clip. (Fig. 6)
13. Reinstall the electrical enclosure cover onto the electrical enclosure. (Fig. 6)

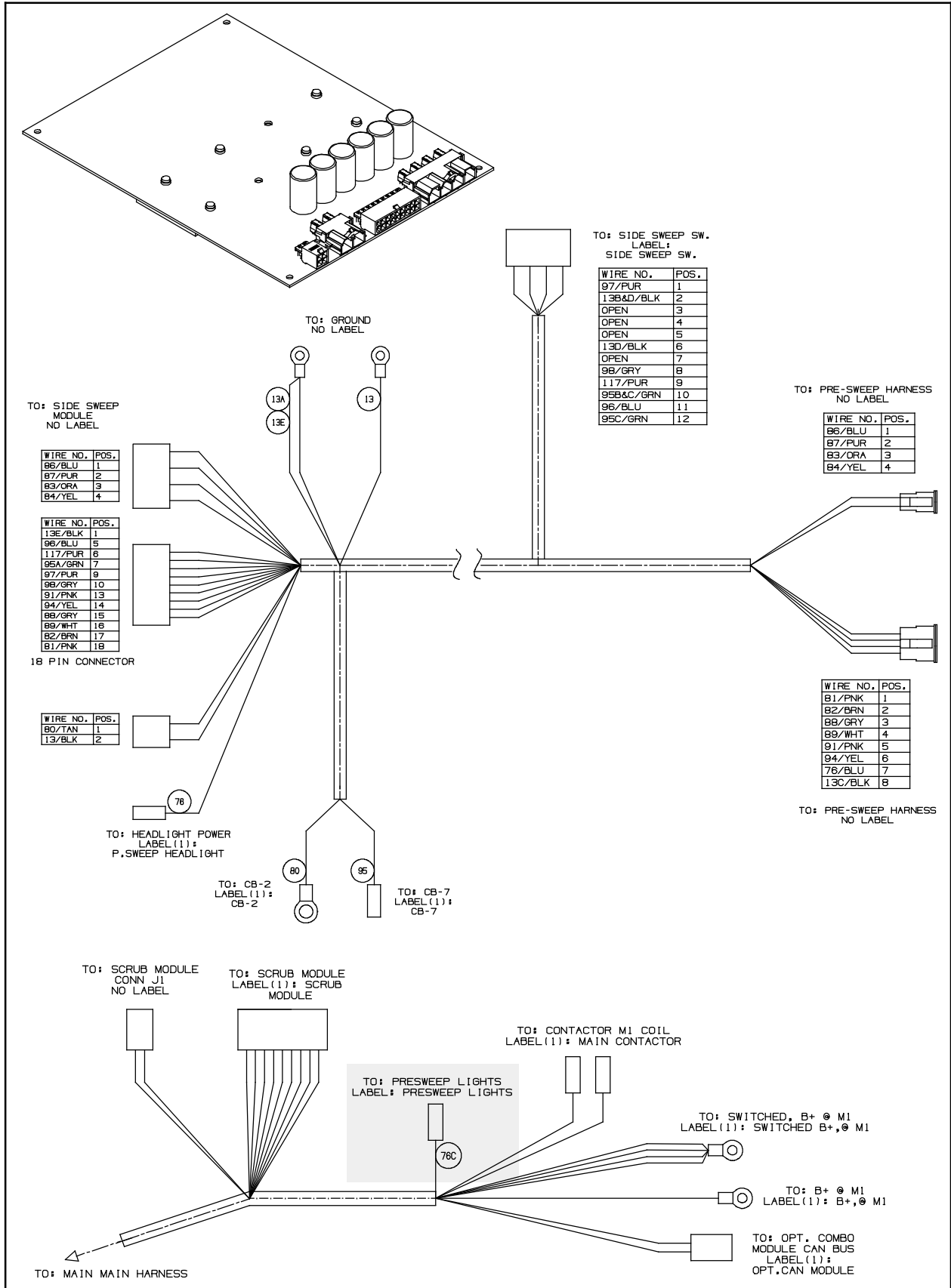


FIG. 7

14. Remove the existing right console panel from the machine and remove all switches from the panel. Set the switches and hardware aside. Discard the removed right console panel. (Fig. 8)
15. Install switches removed from removed right control panel, the LED rocker switch (10), and the rocker switch (12) into the new right console control panel (9). (Fig. 7 / Fig. 8)
16. Reconnect the main wire harness to the switches from the old right console control panel and connect the Pre- Sweep harness to the LED rocker switch (10). (Fig. 7 / Fig. 8)
17. Install the right console control panel (9) onto the shroud. (Fig. 7 / Fig. 8)
18. Remove the M8 hex screws securing the circuit breaker bracket to the machine. Set the hardware aside. (Fig. 8)
19. Pull circuit breaker bracket out far enough to access the main wire harness connectors located behind the bracket. Do not break any connections to the other circuit breakers when pulling the bracket from the machine. (Fig. 8)
20. Insert the 2.5- Amp circuit breaker (8) into location 12 and 15- Amp circuit breaker (11) into location 11 in the circuit breaker bracket. (Fig. 8)
21. Connect the main wire harness to the circuit breaker(s) installed in the previous step. (Fig. 8 / Fig. 9)

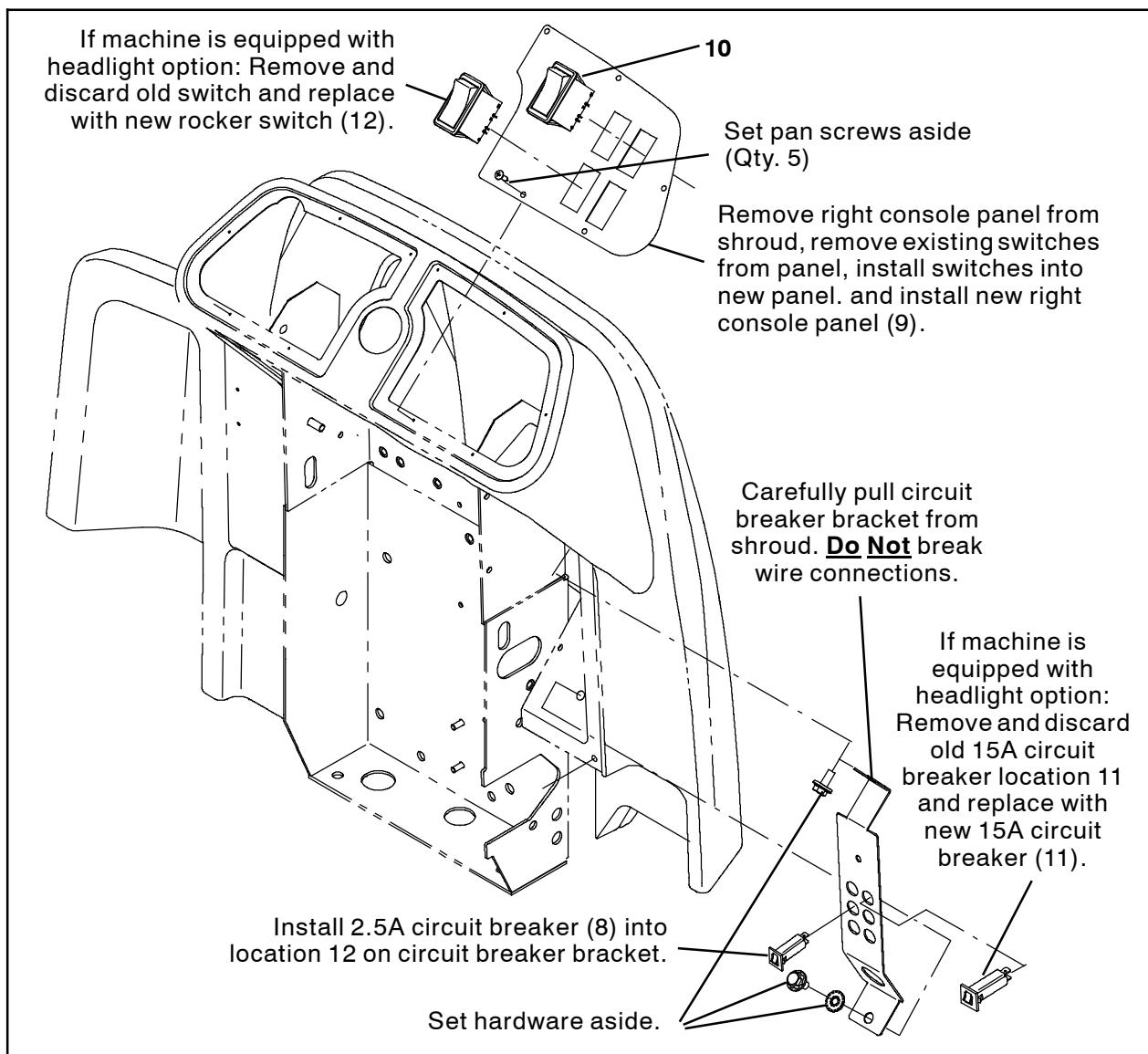


FIG. 8

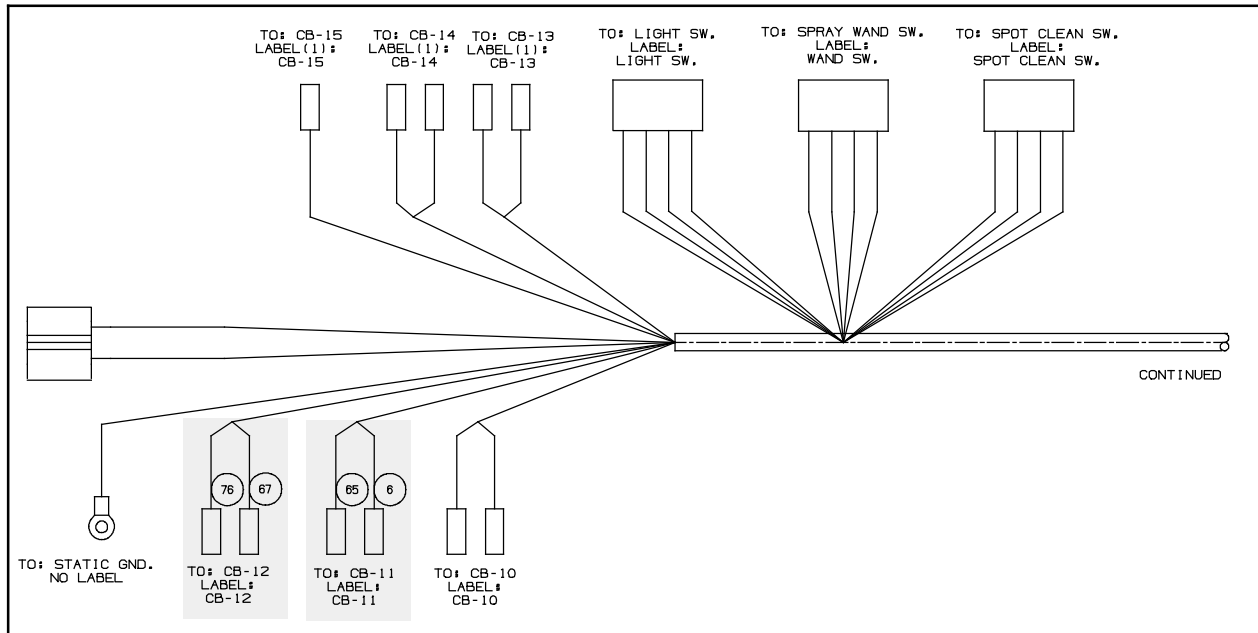


FIG. 9

22. Route the Pre- Sweep harness (30) out to the front left corner of the frame of the machine near where the Pre- Sweep harness will be connected to the harness already installed in the Pre- Sweep assembly.
23. **Machines equipped with optional headlights only:** Disconnect the main wire harness from the headlights and tape off the connector ends with electrical tape.
24. Reinstall the access panel onto the steering channel.

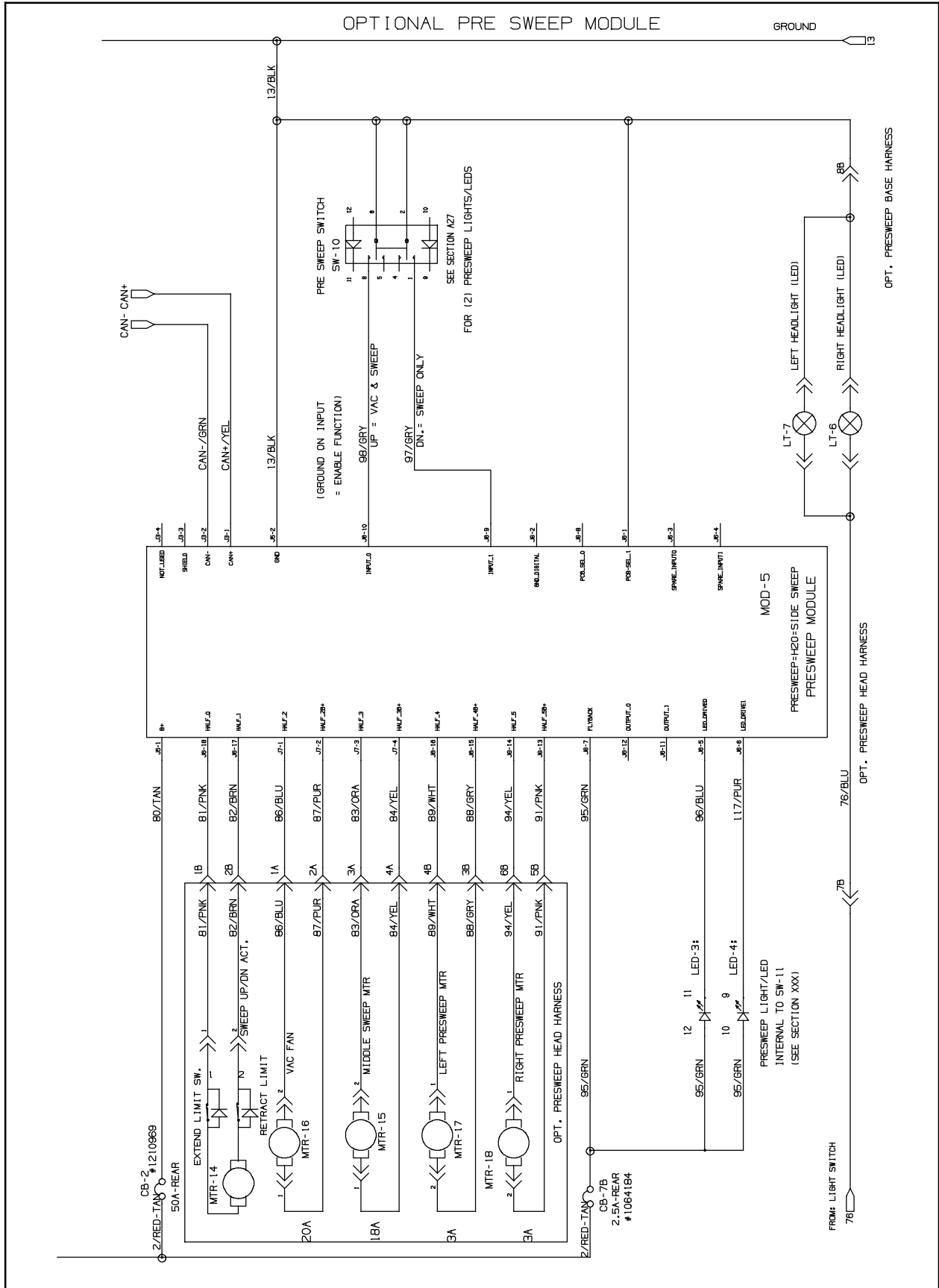


FIG. 10

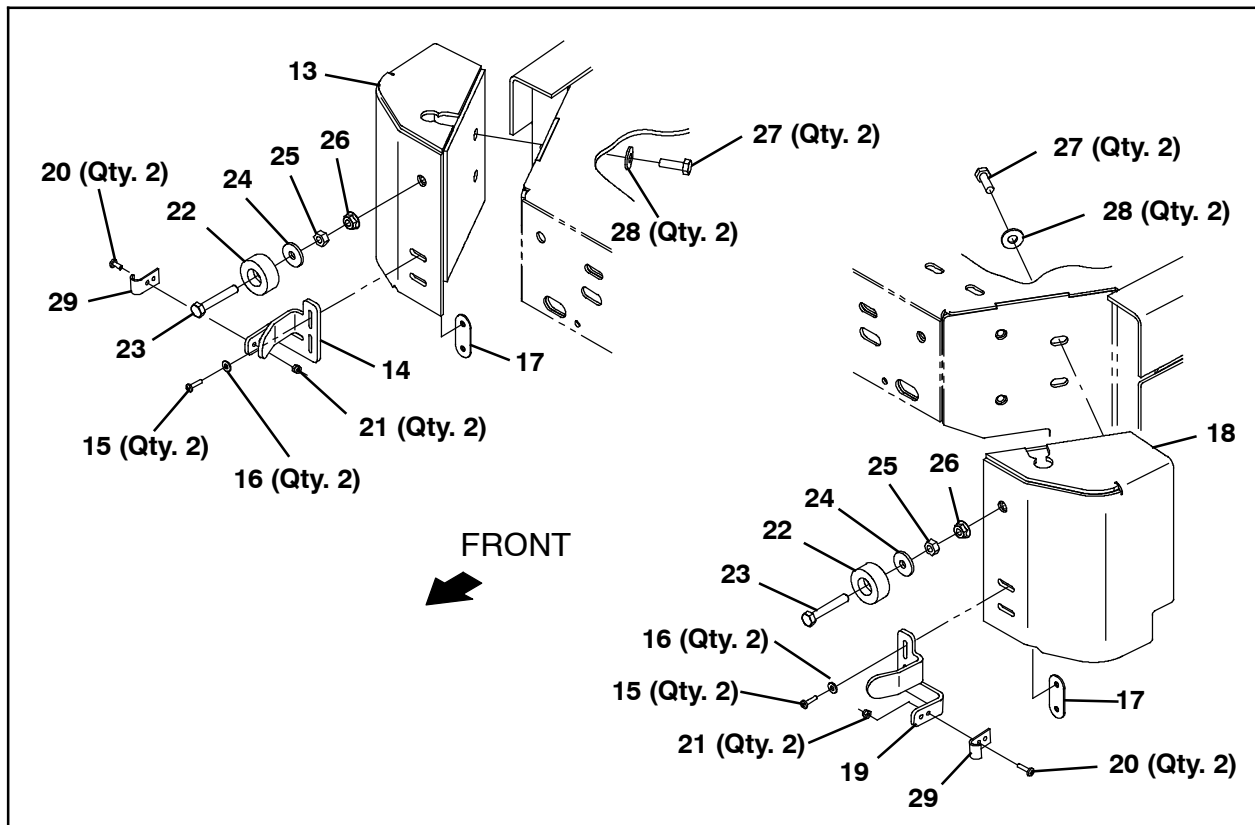


FIG. 11

25. Slide a rubber bumper (22) and flat washer (24) onto each M8 hex screw (23) and use a M8 hex nut (25) to secure the rubber bumper and flat washer onto the hex screw. (Fig. 11)
26. Thread an M8 flange nut (26) onto each M8 hex screw (23). (Fig. 11)
27. Install the bumper assemblies assembled in the previous several steps onto the right corner bracket (13) and the left corner bracket (18). (Fig. 11)
28. Use two M4 pan screws (20) and two M4 hex lock nuts (21) to install a latch keeper (29) onto the right latch bracket (14) and the left latch bracket (19). (Fig. 11)
29. Use two M4 pan screws (15), two flat washers (16) and one M4 nut plate (17) to install the right latch bracket (14) onto the right corner bracket (13). (Fig. 11)
30. Use two M4 pan screws (15), two flat washers (16) and one M4 nut plate (17) to install the left latch bracket (19) onto the left corner bracket (18). (Fig. 11)
31. Use two M8 hex screws (27) and two flat washers (28) to install the right corner bracket (13) and the left corner bracket (18) onto the machine. (Fig. 11)

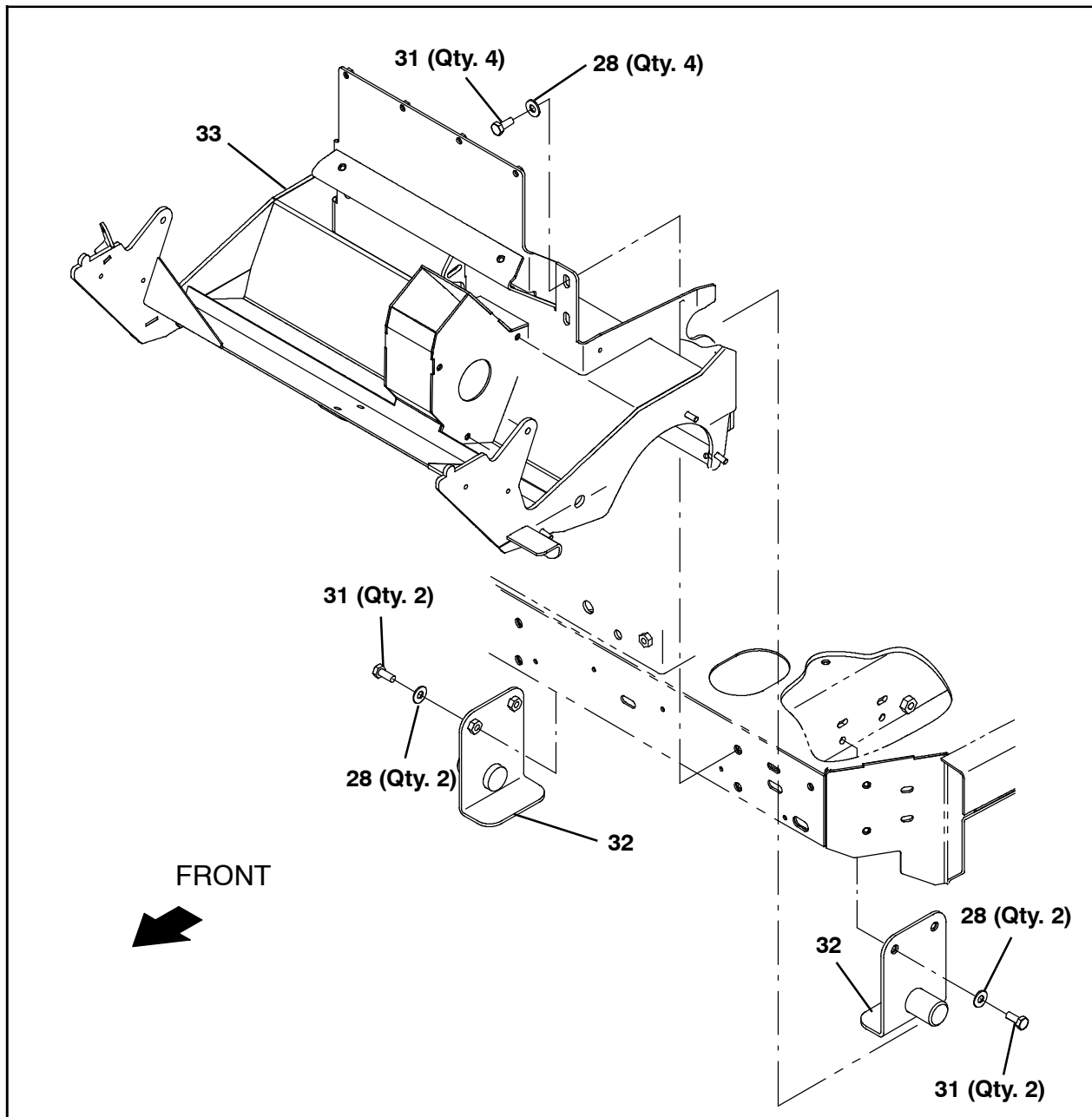


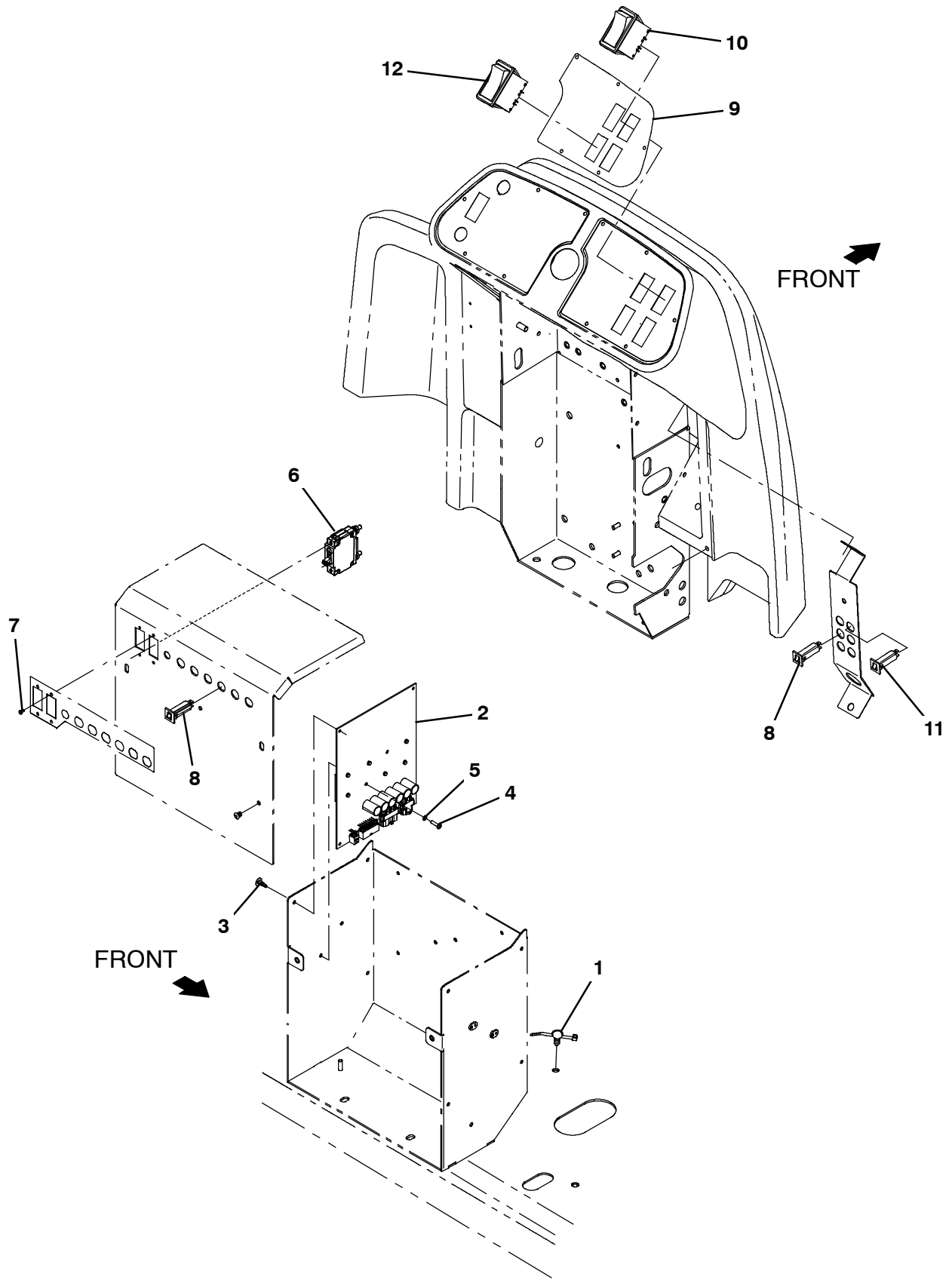
FIG. 12

32. Use two M10 hex screws (31) and two flat washers (28) to install both mount brackets (32) onto the frame of the machine. (Fig. 12)
33. Position the Pre- Sweep assembly so the tines at the rear of the Pre- Sweep frame seat onto the hubs on the mount brackets (32). (Fig. 12)
34. Use four M10 hex screws (31) and four washers (28) to secure the Pre- Sweep assembly to the frame of the machine. (Fig. 12)
35. Connect the Pre- Sweep harness (30) to the harness installed in the Pre- Sweep assembly. (Fig. 7 / Fig. 10)
36. Reinstall the the upper and lower seat platforms onto the machine.
37. Reconnect the main wire harness to the seat switch.
38. Reconnect the battery cable to the machine.
39. Start and test the machine. Operate the Pre- Sweep assembly to ensure it is fully functional.

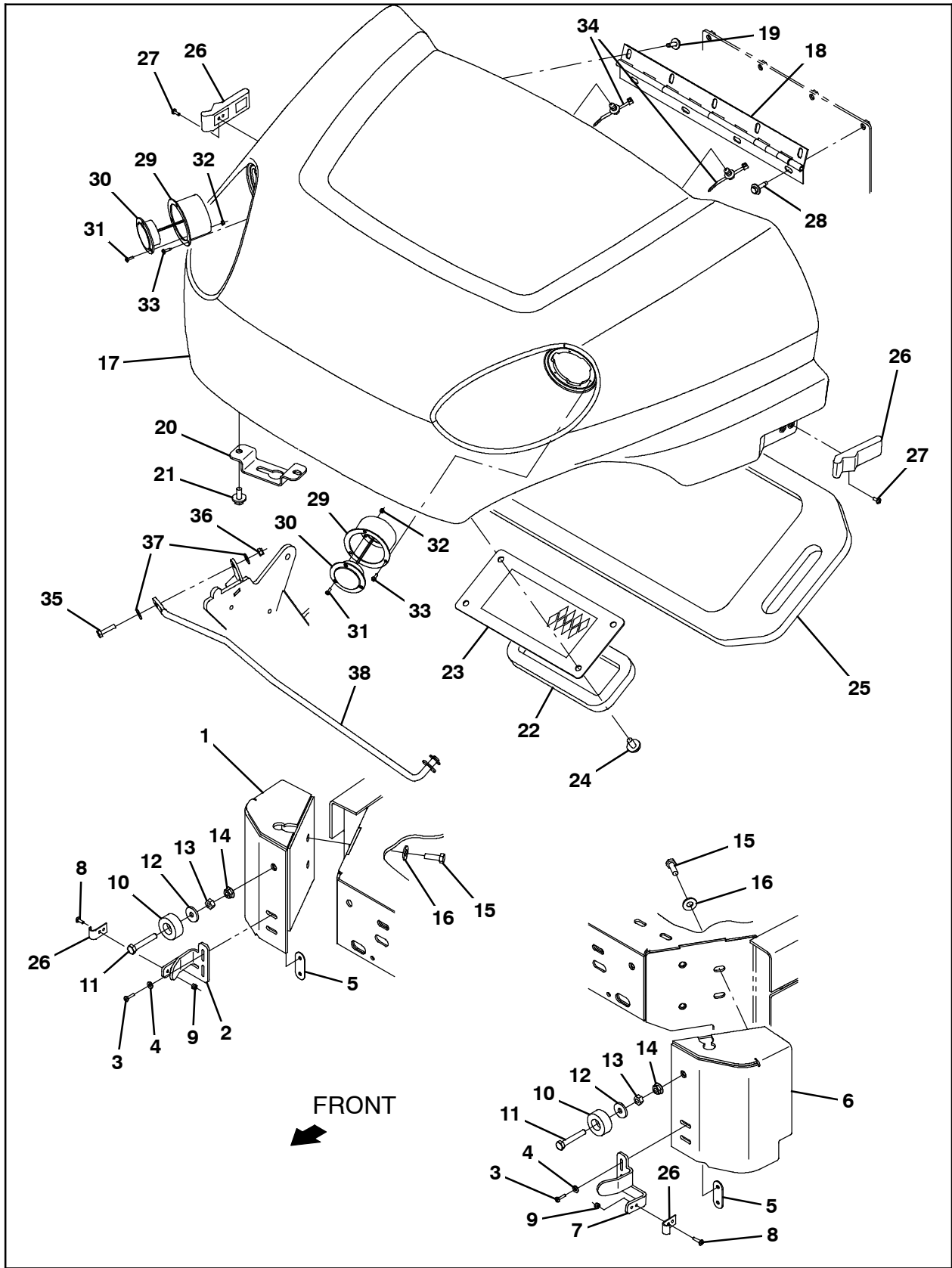
Bill Of Materials For Pre- Sweep Kit, CI [T17] - 9020060

Ref.	Tennant Part No.	Description	Qty.
1	1210807	Wire, Tie [W/.25" Fir Tree Clip]	6
2	9020229	Circuit Board Kit, H2O, Afmkt [T17]	1
3	1210399	Stand- Off, Circuit Board [0.25"]	4
4	06926	Screw, Pan, Phl, M4 X 0.70 X 10, 4.8	2
5	1202860	Washer, Flat, 0.17b 0.31d .03, Nyl	2
6	1210969	Circuit Breaker, 50.0A, Resettable	1
7	06919	Screw, Pan, Phl, M3 X 0.50 X 6, 4.8	2
8	1064184	Circuit Breaker, 02.5A, Resettable	2
9	1208217	Label, Opertnl, Console, Rh, W/Pre- Sweep	1
10	1207284	Switch, Rocker [Mom,Off,Mom, Dual LED]	1
11	1064188	Circuit Breaker, 15.0A, Resettable	1
12	377084	Switch, Rocker, Prgrsv	1
13	1209119	Bracket Wldt, Corner, RH	1
14	1207119	Bracket, Latch, RH	1
15	06927	Screw, Pan, Phl, M4 X 0.70 X 16, 4.8	4
16	19065	Washer, Flat, 0.19b 0.44d .05, Pl, 08	8
17	1211929	Plate Wldt, Nut, M4	2
18	1209140	Bracket Wldt, Corner, LH	1
19	1207123	Bracket, Latch, LH	1
20	06927	Screw, Pan, Phl, M4 X 0.70 X 16, 4.8	4
21	02850	Nut, Hex, Lock, M4 X 0.70, NI	4
22	364614	Bumper, Rbr, 1.5d 0.63 0.31h	2
23	33401	Screw, Hex, M8 X 1.25 X 50, FI, SS	2
24	1017218	Washer, Flat, 0.32b 1.00d .12, SS	2
25	07786	Nut, Hex, Std, M8 X 1.25, SS	2
26	07791	Nut, Hex, Flng, M8 X 1.25	2
27	09010	Screw, Hex, M8 X 1.25 X 25, SS	4
28	01686	Washer, Flat, 0.44b 1.00d .08, SS	12
29	49800	Latch W/ Keeper	2
30	1073042	Harness, Ele [Presweep, Base, T17]	1
31	09028	Screw, Hex, M10 X 1.50 X 25, SS	8
32	1205593	Bracket Wldt, Mount	2
33	1205402	Frame Wldt, Brush, Pre- Sweep	1

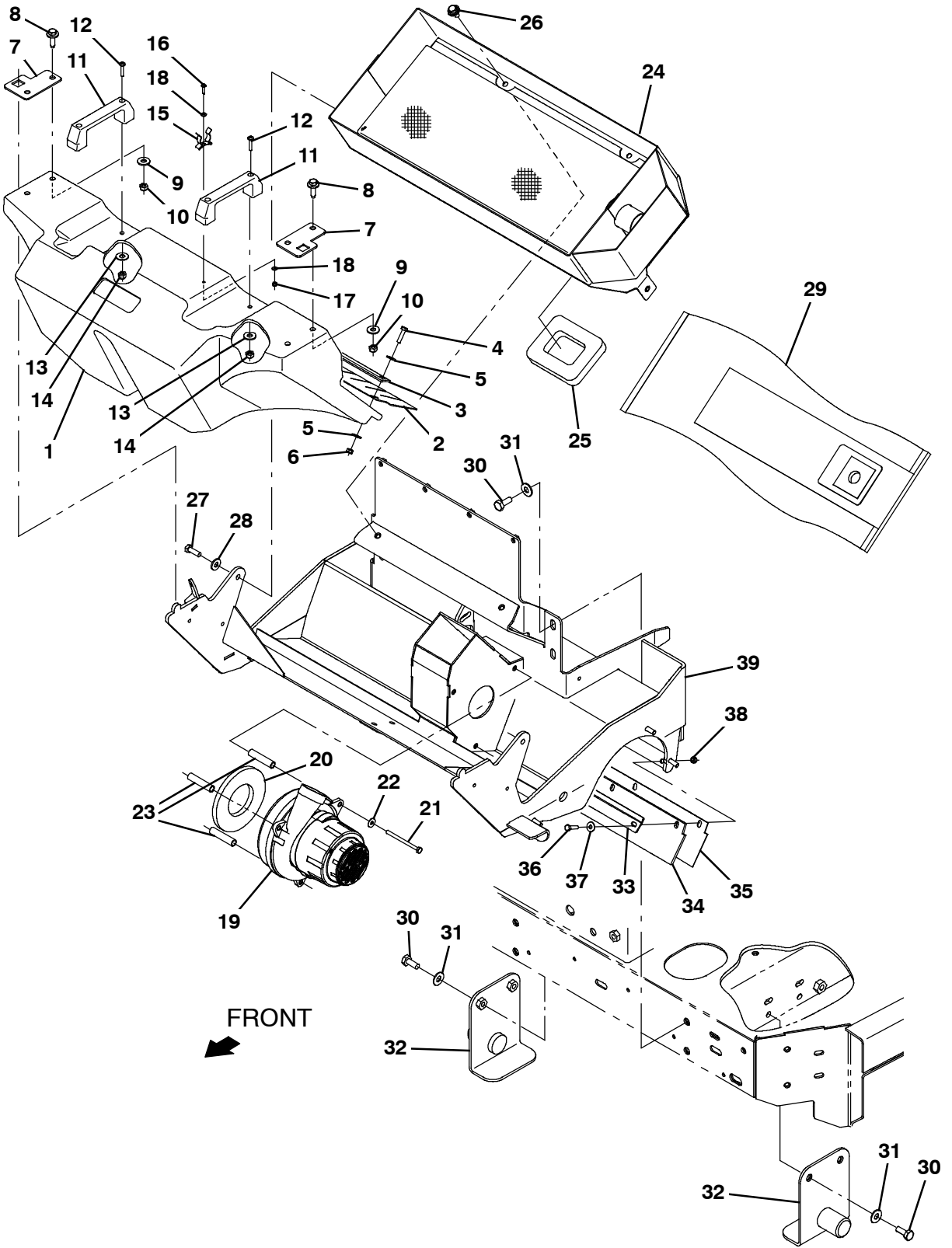
NOTE: Refer to the above bill of materials and views to install the Pre- Sweep assembly onto the machine. Exploded views and bills of materials on the following pages are for reference only. The Pre- Sweep assembly does not need to be disassembled prior to installation onto the machine.



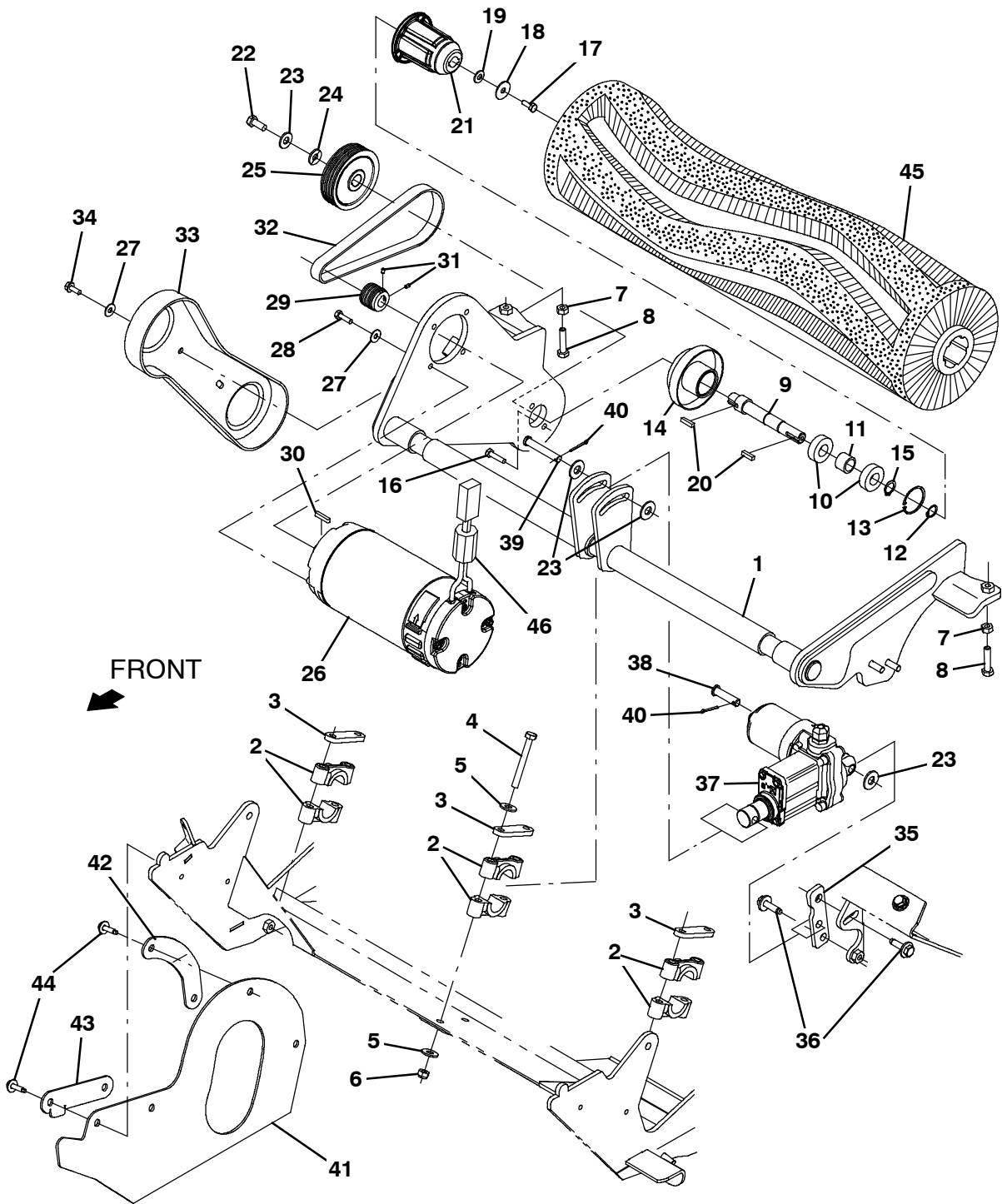
Ref.	Tennant Part No.	Description	Qty.
1	1210807	Wire, Tie [W/.25" Fir Tree Clip]	6
2	9020229	Circuit Board Kit, H2O, Afmkt [T17]	1
3	1210399	Stand- Off, Circuitboard [0.25"]	4
4	06926	Screw, Pan, Phl, M4 X 0.70 X 10, 4.8	2
5	1202860	Washer, Flat, 0.17b 0.31d .03, Nyl	2
6	1210969	Circuit Breaker, 50.0a, Resettable	1
7	06919	Screw, Pan, Phl, M3 X 0.50 X 6, 4.8	2
8	1064184	Circuit Breaker, 02.5a, Resettable	2
9	1208217	Label, Opertnl, Console, RH, W/Pre- Sweep	1
10	1207284	Switch, Rocker [Mom,Off,Mom, Dual LED]	1
11	1064188	Circuit Breaker, 15.0a, Resettable	1
12	377084	Switch, Rocker, Prgrsv	1



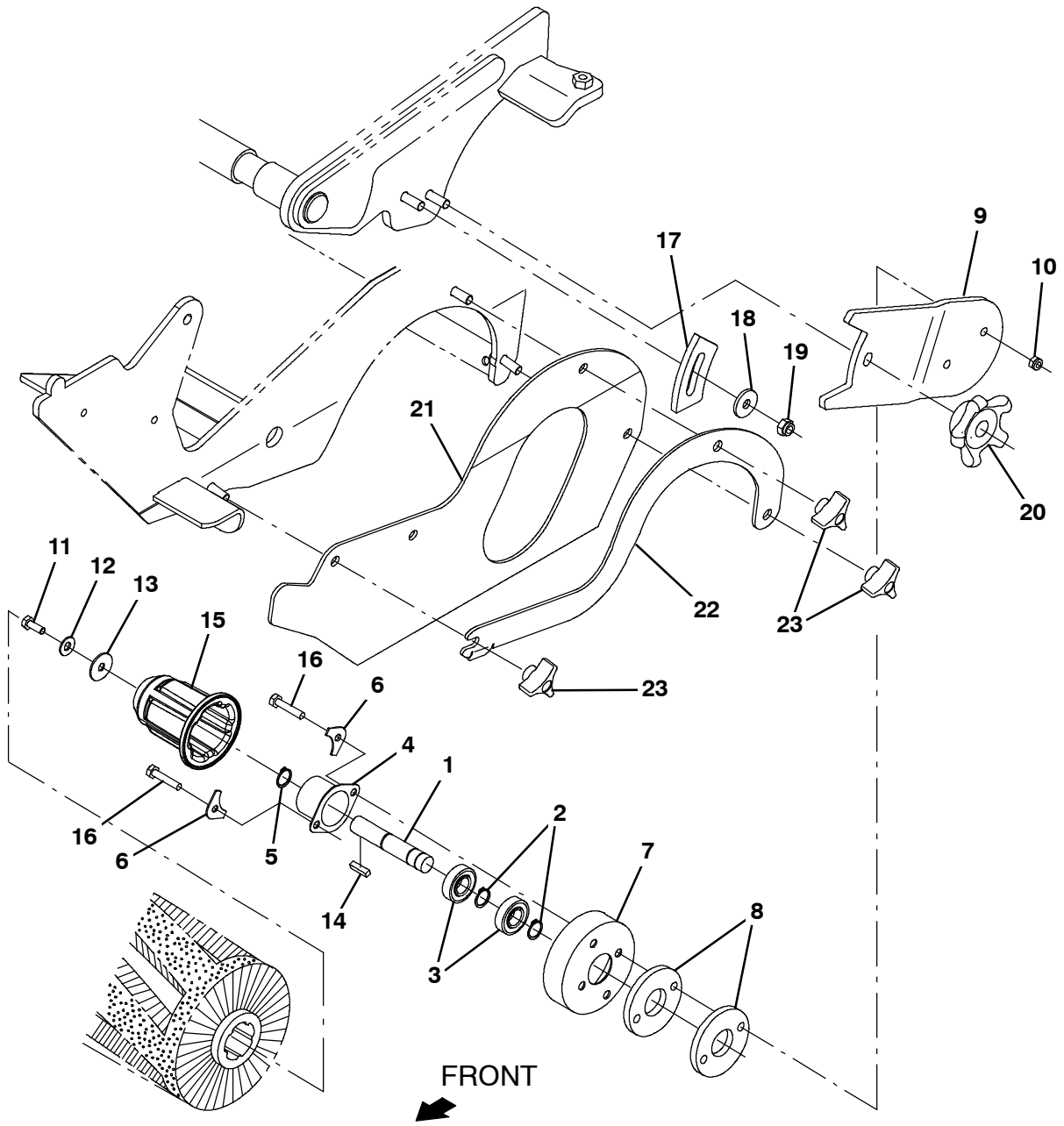
Ref.	Part No.	Description	Qty.	
1	1209119	Bracket Wldt, Corner, Rh	1	
2	1207119	Bracket, Latch, Rh	1	
3	06927	Screw, Pan, Phl, M4 X 0.70 X 16, 4.8	4	
4	19065	Washer, Flat, 0.19b 0.44d .05, Pl, 08	8	
5	1211929	Plate Wldt, Nut, M4	2	
6	1209140	Bracket Wldt, Corner, LH	1	
7	1207123	Bracket, Latch, LH	1	
8	06927	Screw, Pan, Phl, M4 X 0.70 X 16, 4.8	4	
9	02850	Nut, Hex, Lock, M4 X 0.70, NI	4	
10	364614	Bumper, Rbr, 1.5d 0.63 0.31h	2	
11	33401	Screw, Hex, M8 X 1.25 X 50, FI, SS	2	
12	1017218	Washer, Flat, 0.32b 1.00d .12, SS	2	
13	07786	Nut, Hex, Std, M8 X 1.25, SS	2	
14	07791	Nut, Hex, Flng, M8 X 1.25	2	
15	09010	Screw, Hex, M8 X 1.25 X 25, SS	4	
16	01686	Washer, Flat, 0.44b 1.00d .08, SS	4	
▽	9020220	Cover, Preswp, Afmkt [T17]	1	
▲	17	1207151	Cover, Presweep (As Trimmed) [T17]	1
▲	18	603268	Hinge, .25pin .07 2.5w 16.0l, PI	1
▲	19	1040467	Screw, Hex, M6 X 1.00 X 20, 9.8, SEMS	5
▲	20	1207041	Bracket, Catch, Cover, Saftey Rod	1
▲	21	1020341	Screw, Hex, M8 X 1.25 X 20, SS, SEMS	2
▲	22	1058477	Gasket, .75, 03.94w 08.58l, Adh[Nitrile]	1
▲	23	1058451	Plate Wldt, Screen, Hppr	1
▲	24	1020341	Screw, Hex, M8 X 1.25 X 20, SS, SEMS	4
▲	25	1058901	Gasket, Box, Filter	1
▲	26	49800	Latch W/ Keeper	2
▲	27	49697	Screw, Pan, Phl, M4 X 0.70 X 10, SS	4
▲	28	1036892	Screw, Hex, M6 X 1.00 X 25, 9.8, SEMS	4
▲	29	1060784	Bracket Wldt, Mtg, Headlight	2
▲	30	9008182	Light Assy, Pre- Sweep, Afmkt	2
▲	31	06920	Screw, Pan, Phl, M3 X 0.50 X 10, 4.8	6
▲	32	579211	Nut, Hex, Lock, M3 X 0.50, NI, SS	6
▲	33	222267	Screw, Pan, Phl, 06-20 X 0.50, Fmg/Ab	6
▲	34	1210807	Wire, Tie [W/.25" Fir Tree Clip]	3
	35	09007	Screw, Hex, M6 X 1.00 X 25, SS	1
	36	08708	Nut, Hex, Lock, M6 X 1.00, NI	1
	37	01684	Washer, Flat, 0.27b 0.69d .05, SS	2
	38	1208394	Rod Wldt, Safety, Hopper Cover	1



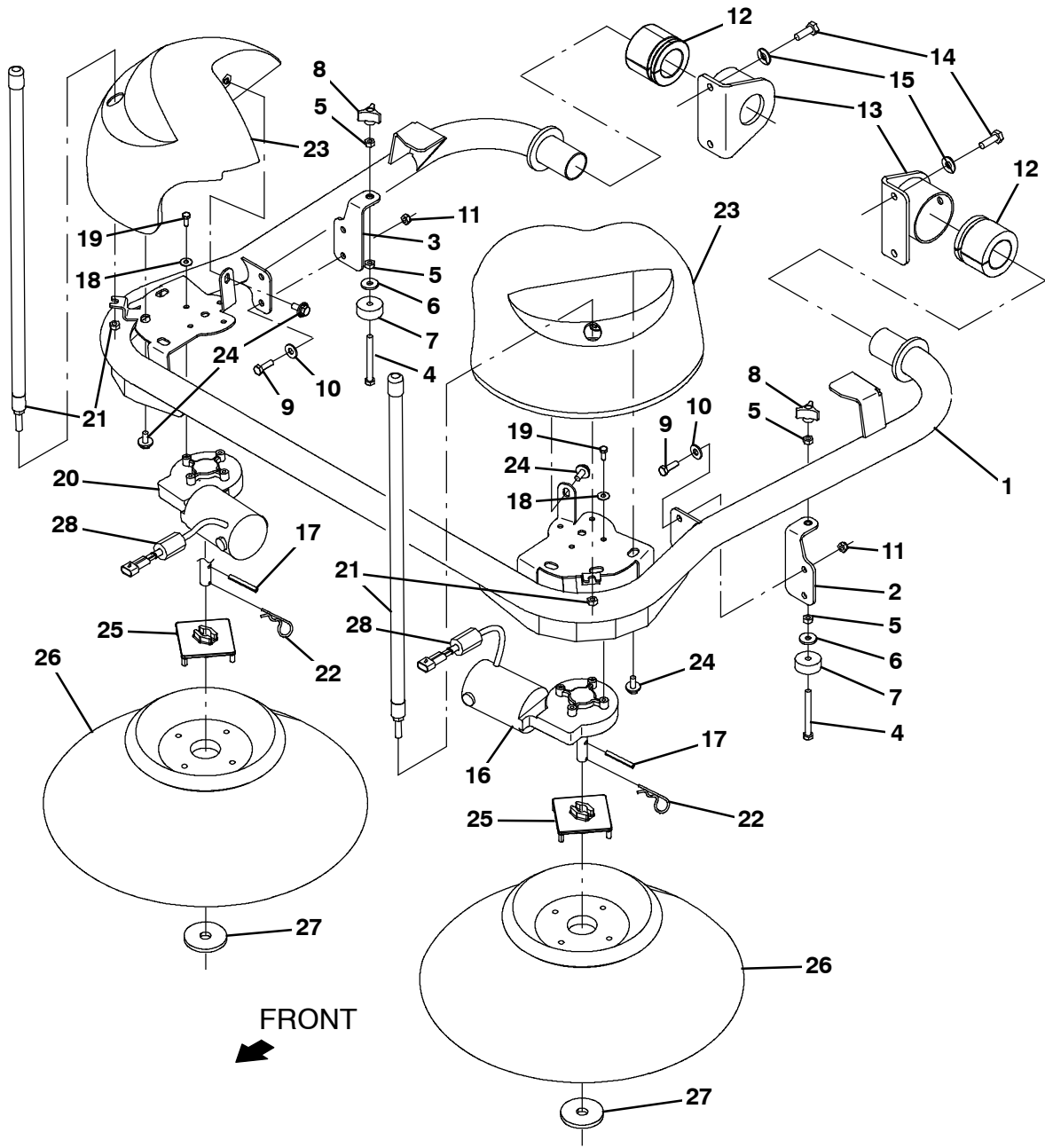
	Ref.	Part No.	Description	Qty.
▽		9020219	Hopper, Preswp, Afmkt [T17]	1
▲	1	1207550	Hopper, Pre- Sweep, Rm- Cptl, Trimmed	1
▲▽		9020255	Skirt Kit, Hopper, Preswp, Afmkt [T17]	1
▲▲	2	1205547	Skirt, Neo, .06, 04.88w 28.26l 05/SI	1
▲▲	3	1205550	Plate, Retainer, Skirt	1
▲▲	4	09007	Screw, Hex, M6 X 1.00 X 25, SS	5
▲▲	5	01684	Washer, Flat, 0.27b 0.69d .05, SS	10
▲▲	6	08712	Nut, Hex, Lock, M6 X 1.00, NI, SS	5
▲	7	1205619	Angle, Mtg, Hopper	2
▲	8	1037354	Screw, Hex, M8 X 1.25 X 30, 9.8, SEMS	4
▲	9	32491	Washer, Flat, 0.31, Std	4
▲	10	08709	Nut, Hex, Lock, M8 X 1.25, NI	4
▲	11	1023920	Handle, Door	2
▲	12	06935	Screw, Pan, Phl, M5 X 0.80 X 25, 4.8	4
▲	13	41178	Washer, Flat, 0.25, Fendr	4
▲	14	06549	Nut, Hex, Lock, M5 X 0.80, NI	4
▲	15	23446	Clip, Grip, Finger, 0.31- 0.75d, Nk PI	1
▲	16	06927	Screw, Pan, Phl, M4 X 0.70 X 16, 4.8	1
▲	17	02850	Nut, Hex, Lock, M4 X 0.70, NI	1
▲	18	19064	Washer, Flat, 0.16b 0.38d .05, PI, 06	2
▽		9020256	Vac Fan Kit, W/Seal [T17]	1
▲▽	19	1200149	Fan, Vacuum, 6.6d, 036vdc, 1 Stage [Bpt]	1
▲▲		1206774	Brush Kit, Motor, Fan	1
▲	20	10912	Seal, Rbr, Clsd, 0.375, 5.0d 2.5h	1
▲	21	391434	Screw, Hex, M6 X 1.00 X 80, SS	3
▲	22	01684	Washer, Flat, 0.27b 0.69d .05, SS	3
▲	23	81719	Tube, 0.38id 0.50od 02.2l, Stl, PI	3
	24	1204954	Filterbox Wldt, Presweep	1
	25	1058695	Gasket, .75, 03.94w 04.92l, Adh[Nitrile]	1
	26	1020341	Screw, Hex, M8 X 1.25 X 20, SS, SEMS	2
	27	09010	Screw, Hex, M8 X 1.25 X 25, SS	2
	28	01685	Washer, Flat, 0.38b 0.88d .08, SS	2
	29	1067452	Bag, Vacuum, Paper [1pick=1pkg(=10pc)]	1
	30	09028	Screw, Hex, M10 X 1.50 X 25, SS	8
	31	01686	Washer, Flat, 0.44b 1.00d .08, SS	8
	32	1205593	Bracket Wldt, Mount	2
	33	1205550	Plate, Retainer, Skirt	1
	34	1207269	Skirt, Neo, .19, 03.62w 28.12l 05/SI	1
	35	1207484	Skirt, Neo, .06, 03.62w 28.12l 05/SI	1
	36	09007	Screw, Hex, M6 X 1.00 X 25, SS	5
	37	01684	Washer, Flat, 0.27b 0.69d .05, SS	5
	38	08712	Nut, Hex, Lock, M6 X 1.00, NI, SS	5
	39	1205402	Frame Wldt, Brush, Pre- Sweep	1



Ref.	Part No.	Description	Qty.
1	1205565	Arm Wldt, Brush	1
2	381502	Bearing, Split, 1.00b	6
3	382224	Plate, Sppt	3
4	09767	Screw, Hex, M8 X 1.25 X 70, SS	6
5	32491	Washer, Flat, 0.31, Std	12
6	08713	Nut, Hex, Lock, M8 X 1.25, NI, SS	6
7	07786	Nut, Hex, Std, M8 X 1.25, SS	2
8	09023	Screw, Hex, M8 X 1.25 X 35, FI, SS	2
9	1211399	Shaft, Drive, Pre- Sweep, Lrg Brg	1
10	28010	Bearing, Ball, 0.62b 1.38d 0.43w	2
11	1055051	Spacer, Brg	1
12	01516	Ring, Retaining, Ext, 0.59d, Basic	1
13	18136	Ring, Retaining, Ext, 0.62d, Basic	1
14	1063363	Housing Wldt, Brg, Pre- Sweep	1
15	01513	Ring, Retaining, Int,	1
16	09007	Screw, Hex, M6 X 1.00 X 25, SS	2
17	11329	Screw, Hex, M6 X 1.00 X 16, NI, SS	1
18	397779	Washer, Flat, 0.28b 1.00d .06, Stl, Blk	1
19	41185	Washer, Flat, Belleville, .25	1
20	00911	Key, Sq, 0.19 X 0.19, 0.75l	2
21	12269	Plug, Drive, Brush, Nyl	1
22	09740	Screw, Hex, M8 X 1.25 X 20, SS	1
23	01686	Washer, Flat, 0.44b 1.00d .08, SS	4
24	41186	Washer, Flat, Belleville, .31	1
25	1054591	Sheave, 07grv, 03.3pd 0.63b [Pj]	1
26	1053342	Motor, Ele, 36vdc 1750rpm 1.00hp 22.0a	1
27	01684	Washer, Flat, 0.27b 0.69d .05, SS	6
28	08716	Screw, Hex, M6 X 1.00 X 20, SS	4
29	1054581	Sheave, 07grv, 1.22pd 0.55b [Pj]	1
30	1014328	Key, Sq, 05mm X 05mm, 25mml	1
31	222818	Screw, Set, Soc, 08- 32 X 0.25, NI	2
32	9020257	Belt Kit, Preswp, Afmkt [T17]	1
33	1059308	Cover, Belt, Pre- Sweep	1
34	361339	Screw, Hex, M6 X 1.00 X 16, Fmg	2
35	1209802	Bracket Wldt, Adj, Actuator	1
36	1037354	Screw, Hex, M8 X 1.25 X 30, 9.8, SEMS	2
37	1208772	Actuator, 36vdc, 2.08strk, 500lbs	1
38	1009356	Pin, Clevis, 10mmd X 040mml	1
39	222260	Pin, Clevis, 0.37d X 2.25l	1
40	08170	Pin, Cotter, .062 X 0.50	2
41	1207488	Skirt, Rbr, .12, 09.11w 16.61l, 05/Hole	1
42	1207486	Plate, Retainer, Skirt, Rh, Curved	1
43	1207487	Plate, Retainer, Skirt, Rh, Straight	1
44	1036892	Screw, Hex, M6 X 1.00 X 25, 9.8, SEMS	4
45	1211934	Brush, Swp, 28l, Wedge, Pyp, Spl	1
46	1052126	Inductor, 12.7Mm [156 Imp At 25Mhz]	1



	Ref.	Part No.	Description	Qty.
▽		48749	Bearing Assy, W/Shaft	1
▲	1	15522	Shaft, Idler, Brush, Main	1
▲	2	01516	Ring, Retaining, Ext, 0.59d, Basic	2
▲	3	41360	Bearing, Ball, 0.59b 1.26d 0.35w[2seal]	2
▲	4	41362	Housing, Flng, Brg	1
▲	5	86773	Ring, Retaining, Ext, 0.59d, Basic	1
	6	32408	Plate, Hold- Down	2
	7	32720	Shield, Plug, Drive	1
	8	392215	Spacer, Arm, Brush	2
	9	1056189	Arm, Brush, Pre- Sweep, Idler, LH	1
	10	08708	Nut, Hex, Lock, M6 X 1.00, NI	2
	11	11329	Screw, Hex, M6 X 1.00 X 16, NI, SS	1
	12	41185	Washer, Flat, Belleville, .25	1
	13	397779	Washer, Flat, 0.28b 1.00d .06, Stl, Blk	1
	14	00911	Key, Sq, 0.19 X 0.19, 0.75l	1
	15	12269	Plug, Drive, Brush, Nyl	1
	16	1040803	Screw, Hex, M6 X 1.00 X 30mm, SS	2
	17	81884	Plate, Arm, Adj	1
	18	1017218	Washer, Flat, 0.32b 1.00d .12, SS	1
	19	08713	Nut, Hex, Lock, M8 X 1.25, NI, SS	1
	20	1054948	Knob Assy, Star, 3.21d 5ear M8	1
	21	1207488	Skirt, Rbr, .12, 09.11w 16.61l, 05/Hole	1
	22	1207485	Plate, Retainer, Skirt, LH	1
	23	222470	Knob, Star, 1.50d 0.88l 3ear M8x1.25 Fem	3



Ref.	Part No.	Description	Qty.
1	1205449	Tube Wldt, Arm, Brush, Side	1
2	1207045	Bracket Wldt, Brush, Adj, LH	1
3	1207047	Bracket Wldt, Brush, Adj, RH	1
4	1060394	Screw, Hex, M8 X 1.25 X 80, FI, SS	2
5	07786	Nut, Hex, Std, M8 X 1.25, SS	4
6	1017218	Washer, Flat, 0.32b 1.00d .12, SS	2
7	364614	Bumper, Rbr, 1.5d 0.63 0.31h	2
8	222470	Knob, Star, 1.50d 0.88l 3ear M8x1.25 Fem	2
9	09010	Screw, Hex, M8 X 1.25 X 25, SS	4
10	01685	Washer, Flat, 0.38b 0.88d .08, SS	4
11	08713	Nut, Hex, Lock, M8 X 1.25, NI, SS	4
12	1053815	Bushing, Flex, Ure	2
13	1060210	Housing Wldt, Pivot	2
14	12317	Screw, Hex, M10 X 1.50 X 30, SS	4
15	01686	Washer, Flat, 0.44b 1.00d .08, SS	4
16	1212823	Motor, Ele, 36vdc 0.08hp 0068rpm Gear LH	1
17	11398	Pin, Roll, .250d X 2.00l, .250/.256	2
18	01684	Washer, Flat, 0.27b 0.69d .05, SS	8
19	11329	Screw, Hex, M6 X 1.00 X 16, NI, SS	8
20	1212824	Motor, Ele, 36vdc 0.08hp 0068rpm Gear RH	1
21	1211837	Marker, Corner	2
22	02942	Pin, Hair, Cotter, 0.62d .120 Wir	2
23	9020221	Cover, Motor, Preswp, Afrmkt [T17]	2
24	1020341	Screw, Hex, M8 X 1.25 X 20, SS, SEMS	8
25	1017441	Plate, Adapter, Brush	2
26	87419	Brush, Disk, Swp, 19.0d, Pyp	2
27	1017802	Washer, Flat, 0.66b 2.50d .19, SS	2
28	1213802	Inductor, Ferrite [spit Case, 220@100Hz]	2

TENNANT COMPANY
P. O. Box 1452
Minneapolis, MN 55440-1452